



### Main Features

- Wetted parts stainless steel 1.4404 (316L)
- Flush diaphragm
- Compact design

### Applications

- Laboratory & Medical
- Oil & Gas / Chemical
- Water & Waste water
- Energy
- Transportation & Logistics
- Machinery

### Description

This chemical seals with threaded process connection are used to protect pressure gauges from high temperatures, aggressive or corrosive fluids.

With the flush diaphragm these seals are used especially for fluids with high viscosity or a tendency to crystallize. They avoid that the medium flows into the instrument, where desposits could be built and generate wrong measurements or pollution of the process.

Chemical seals can be mounted to mechanical pressure gauges, switches or transmitters directly or with a cooling element. The filling fluid of the measuring system has to be chosen compatible to the application.

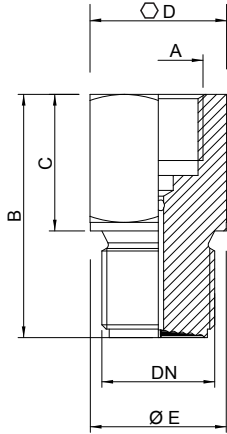
|                     |  |
|---------------------|--|
| Pressure ranges     | 0 ... 1 bar to 0 ... 600 bar<br>(see table below)  |
| Body material       | Stainless Steel 1.4404 (AISI 316L)   |
| Diaphragm           | Stainless Steel 1.4404 (AISI 316L)   |
| Working temperature | -60...200°C (depending on the filling fluid)   |
| Filling fluids      | LRS1 (vaseline : -15 ... +150°C)<br>LRS2 (silicone DC510 : -60 ... +150°C)<br>LRS3 (silicone DC550 : -20 ... +200°C) |

### Minimum pressure ranges <sup>1)</sup>

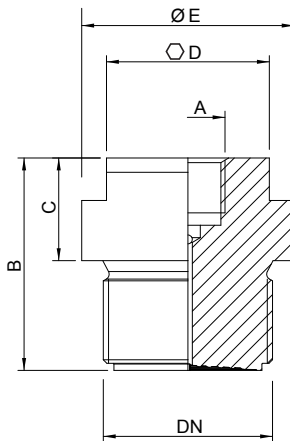
| DN                   | Pressure gauges              |                            | P max.  |
|----------------------|------------------------------|----------------------------|---------|
|                      | NS 50-63 mm                  | NS 80-100-150-160 mm       |         |
| G 1/2<br>1/2 NPT     | 0 ... 100 bar                | 0 ... 250 bar              | 600 bar |
| G 3/4<br>3/4 NPT     | 0 ... 16 bar                 | 0 ... 60 bar               | 600 bar |
| G 1<br>1 NPT         | 0 ... 10 bar                 | 0 ... 25 bar               | 250 bar |
| G 1 1/2<br>1 1/2 NPT | 0 ... 1.6 bar / -1 ... 3 bar | 0 ... 4 bar / -1 ... 5 bar | 160 bar |
| G 2<br>2 NPT         | 0 ... 1 bar / -1 ... 0 bar   | 0 ... 1 bar / -1 ... 0 bar | 40 bar  |

<sup>1)</sup> Valid for -20°C < T < 100°C. Other temperature ranges on request

## Dimensions - Types of mounting



| Code      | DN    | A   | B  | C  | Ø E   | Ø D | Weight kg |
|-----------|-------|-----|----|----|-------|-----|-----------|
| D055-2H14 | G ½   | G ¼ | 51 | 26 | 26    | 27  | 0.17      |
| D055-2L14 | G ½   | G ½ | 57 | 32 | 26    | 27  | 0.17      |
| D055-2H24 | ½ NPT | G ¼ | 51 | 26 | 26    | 27  | 0.17      |
| D055-2L24 | ½ NPT | G ½ | 57 | 32 | 26    | 27  | 0.17      |
| D055-2H15 | G ¾   | G ¼ | 52 | 27 | 31.85 | 32  | 0.27      |
| D055-2L15 | G ¾   | G ½ | 57 | 32 | 31.85 | 32  | 0.27      |
| D055-2L25 | ¾ NPT | G ½ | 57 | 32 | 31.85 | 32  | 0.27      |



| Code      | DN      | A   | B  | C  | Ø E | Ø D | Weight kg |
|-----------|---------|-----|----|----|-----|-----|-----------|
| D055-2L16 | G 1     | G ½ | 55 | 29 | 40  | 30  | 0.37      |
| D055-2L26 | 1" NPT  | G ½ | 55 | 29 | 40  | 30  | 0.37      |
| D055-2L1A | G 1 ½   | G ½ | 60 | 29 | 60  | 46  | 0.95      |
| D055-2L2A | 1 ½ NPT | G ½ | 60 | 29 | 60  | 46  | 0.95      |
| D055-2L1C | G 2     | G ½ | 62 | 29 | 70  | 54  | 1.43      |
| D055-2L2C | 2" NPT  | G ½ | 62 | 29 | 70  | 54  | 1.43      |

## Ordering details D055

D055 - X X XX

### Model

Flush diaphragm seal with screwed process connection

D055

### Body material

Stainless Steel 1.4404 (AISI 316L)

2

### Instrument connection

G ½

G ¼<sup>2)</sup>

L

H

### Process connection

G ½<sup>3)</sup>

½ NPT<sup>3)</sup>

G ¾

¾ NPT

G 1

1 NPT

G 1 ½

1 ½ NPT

G 2

2 NPT

14

24

15

25

16

26

1A

2A

1C

2C

<sup>2)</sup> Available only with process connection G ½, ½ NPT and G ¾

<sup>3)</sup> Not available with capillary