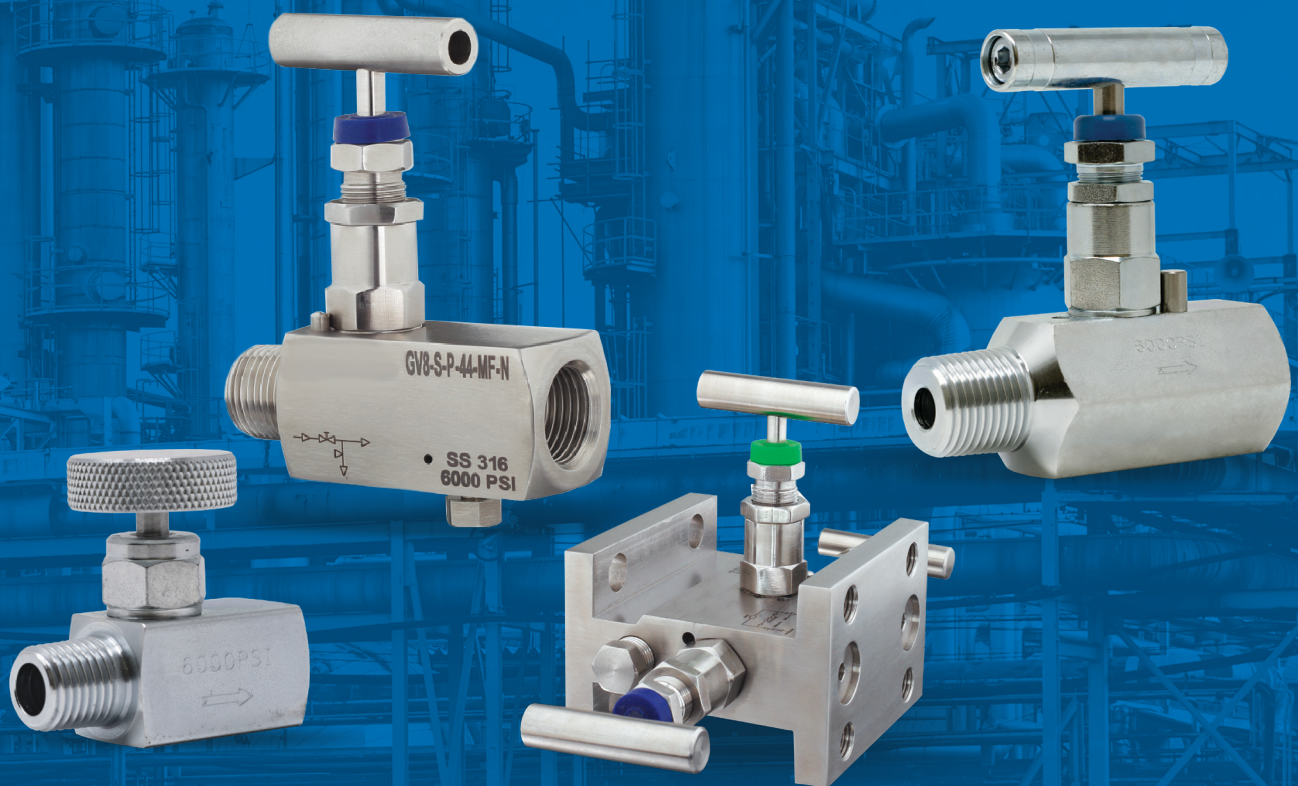


Valves and Manifolds

By Engineered Specialty Products



ESPGauges.com







CHOOSE THE RIGHT VALVES FOR YOUR PROCESS...

Applicable across multiple industries, valves provide the ability to bleed, block and regulate your system's flow. Valves and manifolds are a critical component in almost every pressurized system where you need the ability to shut off the flow of fluids, air, or oil. Valves and Manifolds improve productivity and efficiency by allowing your process to run while performing maintenance, all while protecting your equipment and creating a safer and more reliable system.

Our technical experts are committed to product quality and innovation. Valves and manifolds by Engineered Specialty Products (ESP), Inc. are better quality, better value and have more capability than other instruments in the industry. With 164 valve category items in stock and direct shipping options, ESP is committed to getting the parts you need when you need them.

EXPERIENCE THE ESP DIFFERENCE



SPEED



AVAILABILITY



SERVICE



NV - NEEDLE VALVE

Process Temperature: 240° C

Materials: SS / PTFE / Monel / Hastelloy C

Pressure Rating: 6000 psi



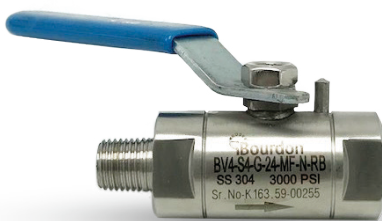
GV8 - BLOCK & BLEED VALVE

Process Temperature: 240°C

Nominal Size: 1/4", 3/8", 1/2", 3/4"

Materials: 316 SS / 316L SS / 304 SS, Carbon Steel, Monel, Hastelloy C

Pressure Rating: 6000 psi



BV4 - BALL VALVE

Process Temperature: 240°C

Nominal Size: 1/4", 3/8", 1/2", 3/4", 1"

Materials: 316 SS / 316L SS / 304 SS, Carbon Steel, Monel, Hastelloy C

Pressure Rating: 6000 psi



EC - GAUGE COCK

Process Temperature: Up to 180°C

Nominal Size: 1/2", 1/4", 3/8"

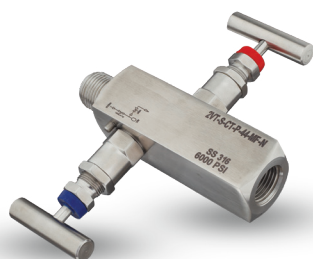
Materials: 316 SS, 304 SS

Pressure Rating: 100 kg/cm²



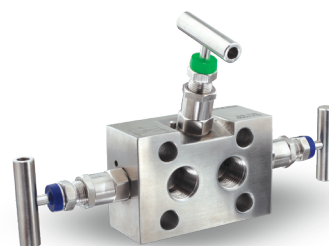
YOUR CUSTOM PART SOLUTION

Looking for something more specific? We're here to help you develop the right solution to meet even the most complex application.



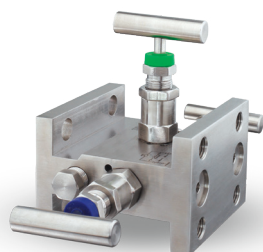
2VT - 2-VALVE MANIFOLD

Process Temperature: 240° C
Pressure Rating: 6000 psi
Materials: SS / Monel / Hastelloy C



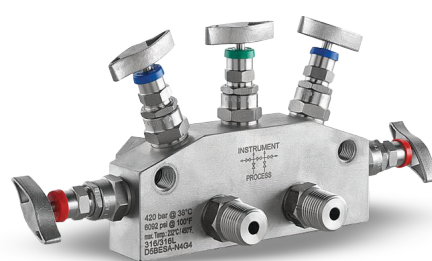
3VA - 3-VALVE MANIFOLD

Process Temperature: 240°C
Nominal Size: 2F (1/4"xFlange), 4F (1/2"xFlange)
Materials: 316 SS / 316L SS / 304 SS, Carbon Steel, Monel, Hastelloy C
Pressure Rating: 6000 psi



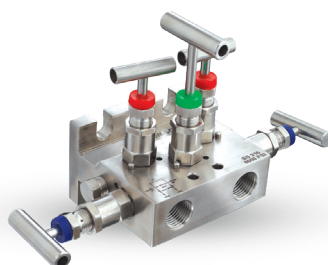
3VH - 3-VALVE MANIFOLD FLANGE TO FLANGE

Process Temperature: 240°C
Nominal Size: 2F (1/4"xFlange), 4F (1/2"xFlange)
Materials: 316 SS / 316L SS / 304 SS, Carbon Steel, Monel, Hastelloy C
Pressure Rating: 6000 psi



5VS - 5-VALVE MANIFOLD FLANGE OUTLET

Process Temperature: Up to 240°C
Nominal Size: 2F (1/4"xFlange), 4F (1/2"xFlange)
Materials: 316 SS, 304 SS
Pressure Rating: 100 kg / cm²



5VK - 5-VALVE MANIFOLD

Process Temperature: Up to 240°C
Nominal Size: 2F (1/4"xFlange), 4F (1/2"xFlange)
Materials: 316 SS / 304 SS, Carbon Steel, Monel, Hastelloy C
Pressure Rating: 100 kg/cm²

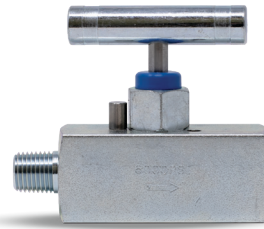


NVS SUPER MINI NEEDLE VALVE

Materials: Carbon Steel or 316 SS

Pressure Rating: Soft seat - 6000 psi at 200° F

Connection Size: 1/4" NPT, male x female, female x female; male x male

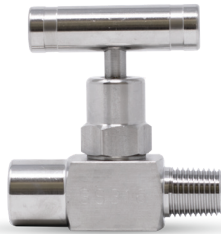


NV/NVL FULL SIZE NEEDLE VALVE

Materials: Carbon Steel or 316 SS

Pressure Rating: Soft seat - 6000 psi at 200° F; Hard seat - 10,000 psi at 200° F

Connection Size: NV - 1/2" NPT, 3/8" NPT (316 SS only); NVL - 1/4" NPT; For 3/4" or 1" sizes; male x female, female x female



NV-1/4 MINI NEEDLE VALVE

Materials: Carbon Steel or 316 SS

Pressure Rating: Soft seat - 6000 psi at 200° F; Hard seat - 10,000 psi at 200° F

Connection Size: 1/4" NPT, male x female, female x female; male x male

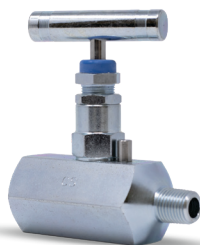


NV-90 ANGLE NEEDLE VALVE

Materials: Carbon Steel or 316 SS

Pressure Rating: Soft seat - 6000 psi at 200° F; Hard seat - 10,000 psi at 200° F

Connection Size: 1/4" or 1/2" NPT; male x female, female x female



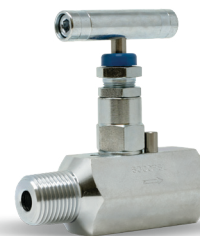
HV HEX BODY - HARD SEAT NEEDLE VALVE

Process Temp: -65° F to 842° F

Materials: Carbon Steel or 316 SS

Pressure Rating: Hard seat - 10,000 psi at 200° F

Connection Size: 1/4", 1/2", 3/4" or 1" NPT; male x female, female x female



HV HEX BODY - SOFT SEAT NEEDLE VALVE

Process Temp: -65° F to 464° F

Materials: Carbon Steel or 316 SS

Pressure Rating: Soft seat - 6000 psi at 200° F

Connection Size: 1/4", 1/2", 3/4" or 1" NPT; male x female, female x female

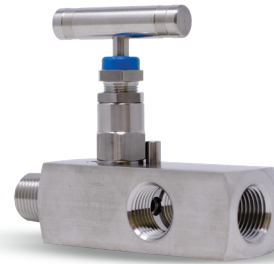


BV BLOCK & BLEED VALVE

Materials: 316 SS

Pressure Rating: 6000 psi soft seat; 10,000 psi hard seat

Connection Size: 1/4" NPT or 1/2" NPT; male x female

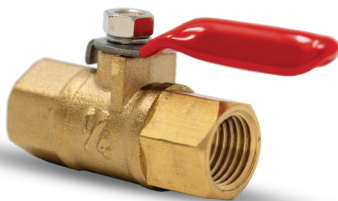


GV MULTI-PORT GAUGE VALVE

Materials: 316 SS

Pressure Rating: 6000 psi soft seat; 10,000 psi hard seat

Connection Size: 1/2" NPT male inlet x (3) 1/2" NPT female outlet; 3/4" NPT male inlet x (3) 1/2" NPT female outlet

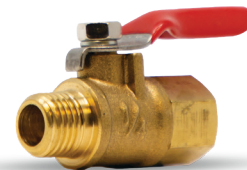


GAUGE VALVE - MINI BALL VALVE A14

Materials: Brass

Pressure Rating: 700 psi at 250° F

Connection Size: 1/4" FNPT X 1/4" FNPT; 1/2" FNPT X 1/2" FNPT



GAUGE VALVE - MINI BALL VALVE A15

Materials: Brass

Pressure Rating: 700 psi at 250° F

Connection Size: 1/4" MNPT X 1/4" FNPT



GAUGE VALVE - BRASS NEEDLE VALVE

Materials: Brass

Pressure Rating: 600 psi at 300 °F

Connection Size: 1/4" FNPT X 1/4" FNPT; 1/4" MNPT X 1/4" FNPT; 1/4" MNPT X 1/4" MNPT

Worldwide Presence

Worldwide certified quality.



Assembly in the U.S.A., France and India ensures the speed, availability and service you need.

Atlanta, GA U.S.A.

India

Switzerland

Denmark

France

Venezuela

Germany

Saudi Arabia

Bourdon USA

BourdonUSA.com

Engineered Specialty Products

3295 Cobb International Blvd.
Kennesaw, GA 30152

Call Toll Free: 888.650.6923